

Customer :

customer

Customer part :

customer part

Comment :

Comment

S1=5.5

S2=6.64

Tmax=472

Tp S2=511.0

PI=0.45

HI=98

Sample =1804.8

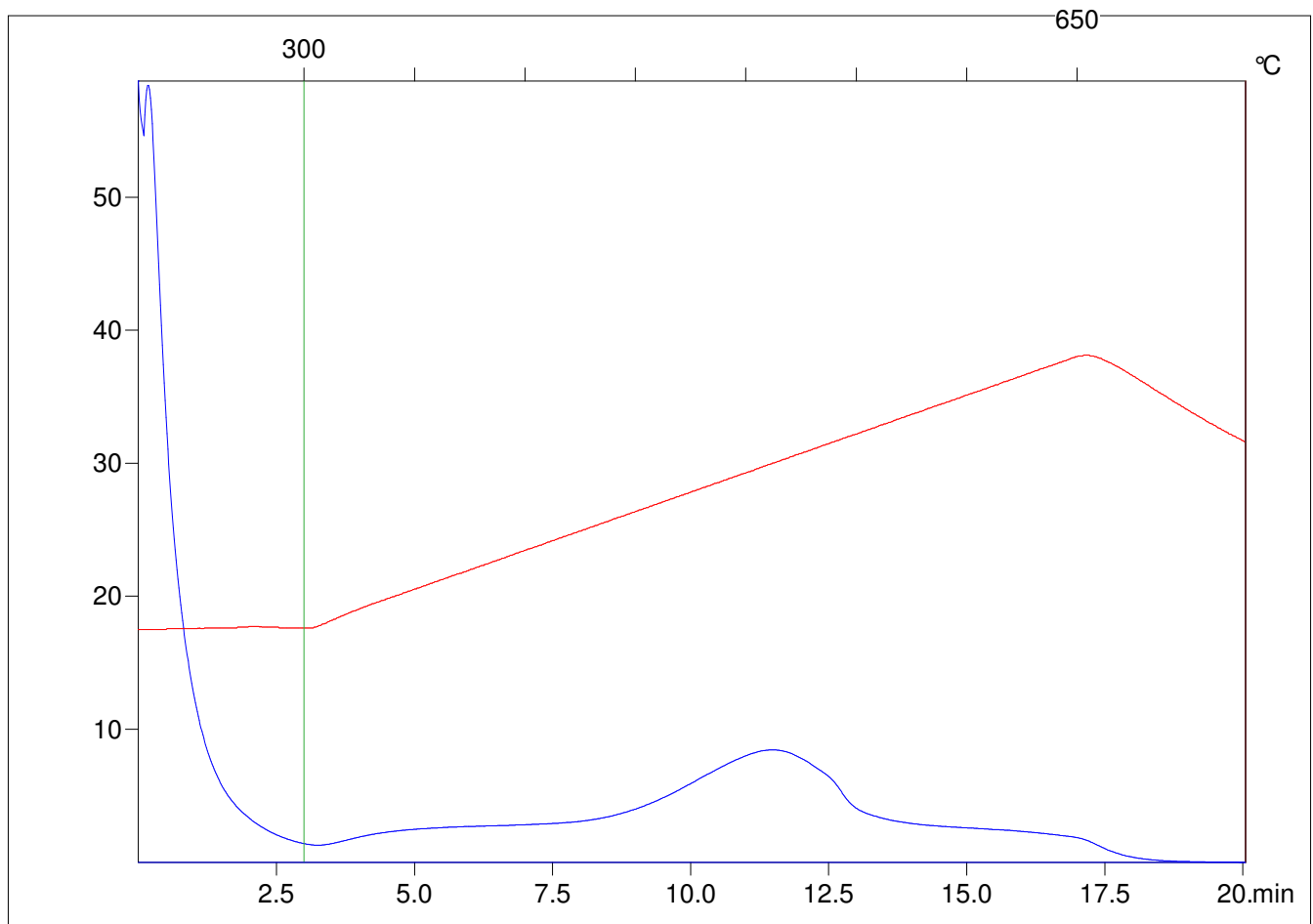
Method =Bulk Rock

Cycle=Basic

KFID(10*9)=1444

Qty =70.0

TOC=6.81



C:\VINC\PK4_1792\PK021.R00 : FID pyrolysis graphic

State Ok

Pyro Status Negative value

Oxi Status Negative value